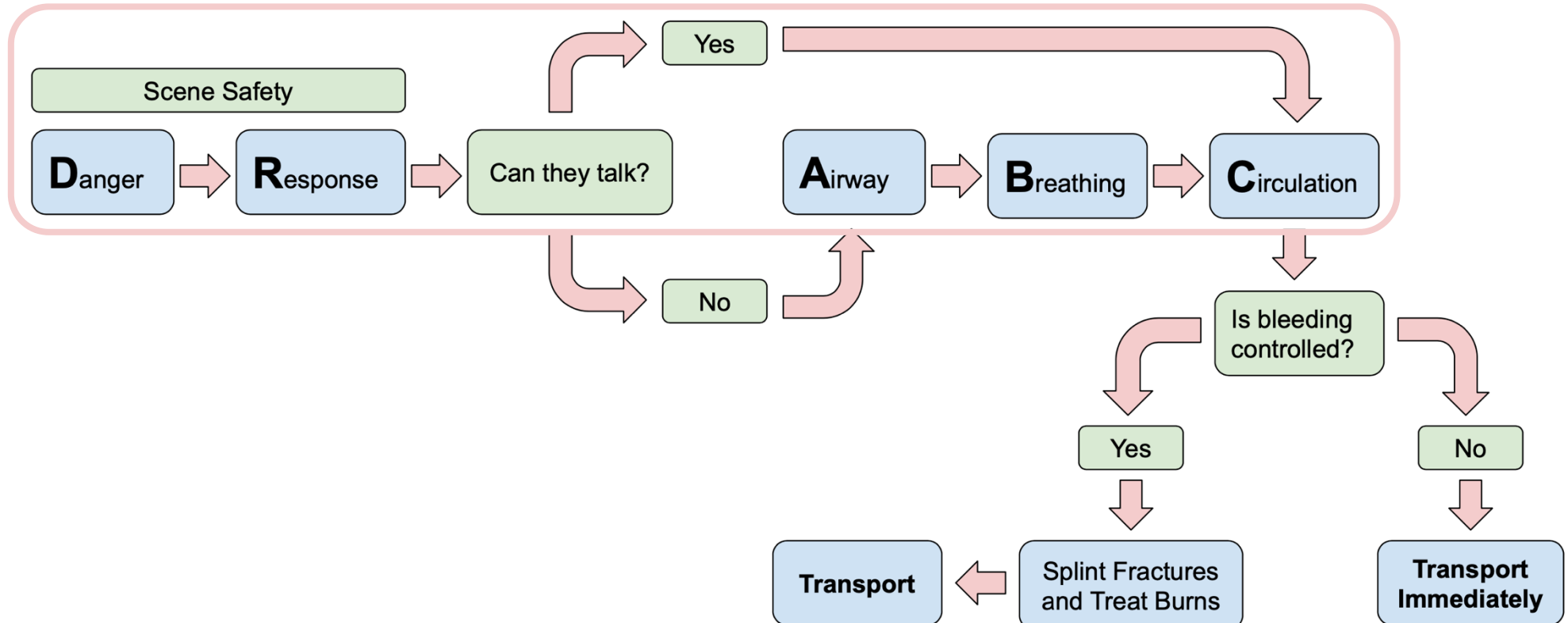


FIRST AID QUICK SHEET

Trauma Care Overview



When providing first aid, it is important that you follow the steps of **DR. ABC**, fracture splinting, and transport in the correct order to give the casualty the best chance of survival. The decision tree below will help you to follow these steps appropriately. The arrows (*red*) show the progression of questions to consider (*green*) steps to take (*blue*) when providing first aid.



*Please be safe and practice first aid at your own risk. LFR International is not liable for injuries resulting from any first aid attempts.